

## Column Speaker

## ▶ CU-410F/420F/430F/440F

(구모델 : CU-410/420/430/440)



Model	CU-410F	CU-420F	CU-430F	CU-440F
Rated power	10W/5W	20W/10W	30W/15W	40W/20W
Impedance	1kΩ/2kΩ	500Ω/1kΩ	330Ω/660Ω	250Ω/500Ω
Frequency Response (-10dB)	180Hz - 14kHz			
Sensitivity (1W/1m)	91dB	94dB	95dB	95dB
Weight	2.8kg	3.8kg	4.8kg	5.8kg
Dimensions(mm) <WxHxD>	156x300x129	156x400x129	156x500x129	156x600x129

## ▶ CU-410FO/FOU/420FO/FOU/430FO/FOU/440FO/FOU

(구모델 : CU-510/510A/520/520A/530/530A/540/540A)



Model	CU-410FO/FOU	CU-420FO/FOU	CU-430FO/FOU	CU-440FO/FOU
Rated power	10W/5W	20W/10W	30W/15W	40W/20W
Impedance	1kΩ/2kΩ	500Ω/1kΩ	330Ω/660Ω	250Ω/500Ω
Frequency Response (-10dB)	150Hz - 20kHz			
Sensitivity (1W/1m)	90dB	93dB	94dB	96dB
Weight	2.8kg	3.13kg	3.9kg	4.76kg
Dimensions(mm) <WxHxD>	156x300x129	156x400x129	156x500x129	156x600x129

## ▶ CU-810FO/820FO/830FO/840FO

(구모델 : CU-810/820/830/840)



Model	CU-810FO	CU-820FO	CU-830FO	CU-840FO
Rated power	10W/5W	20W/10W	30W/15W	40W/20W
Impedance	1kΩ/2kΩ	500Ω/1kΩ	330Ω/660Ω	250Ω/500Ω
Frequency Response (-10dB)	150Hz - 20kHz			
Sensitivity (1W/1m)	90dB	93dB	94dB	96dB
Weight	2.9kg	3.6kg	4.7kg	5.4kg
Dimensions(mm) <WxHxD>	149x310x124	149x420x124	149x530x124	149x640x124

## ▶ CU-210M/220M/230M/240M

(구모델 : CS-410/420/430/440)



Model	CU-210M	CU-220M	CU-230M	CU-240M
Rated power	10W/5W	20W/10W	30W/15W	40W/20W
Impedance	1kΩ/2kΩ	500Ω/1kΩ	330Ω/660Ω	250Ω/500Ω
Frequency Response (-10dB)	180Hz - 12kHz	180Hz - 12kHz	180Hz - 12kHz	180Hz - 10kHz
Sensitivity (1W/1m)	91dB	94dB	95dB	97dB
Weight	2.5kg	3.5kg	4.5kg	5.5kg
Dimensions(mm) <WxHxD>	159x300x115	159x400x115	159x500x115	159x600x115

## ▶ CU-210MO/220MO/230MO/240MO

(구모델 : CS-510/520/530/540)



Model	CU-210MO	CU-220MO	CU-230MO	CU-240MO
Rated power	10W/5W	20W/10W	30W/15W	40W/20W
Impedance	1kΩ/2kΩ	500Ω/1kΩ	330Ω/660Ω	250Ω/500Ω
Frequency Response (-10dB)	150Hz - 20kHz	150Hz - 20kHz	150Hz - 20kHz	150Hz - 12kHz
Sensitivity (1W/1m)	90dB	93dB	94dB	96dB
Weight	2.6kg	3.04kg	3.74kg	4.53kg
Dimensions(mm) <WxHxD>	159x300x115	159x400x115	159x500x115	159x600x115

## Ceiling Speaker

## ▶ CS-03M/610M

(구모델 : CS-03/10M)



Model	CS-03M	CS-610M
Rated power	3W/2W/1W	10W/5W/3W
Impedance	3.3kΩ/5kΩ/10kΩ	1k/2K/3.3K
Frequency Response (-10dB)	100Hz-15kHz	TDB
Sensitivity (1W/1m)	90dB	TDB
Weight	650g	TDB
Cut-Out Diameter(mm)	ø195 ~ ø200	
Dimensions(mm)	ø228 x 96(D)	

## ▶ CS-503F/510F

(구모델 : CS-3F5/10F5)



Model	CS-503F	CS-510F
Rated power	3W/2W/1W	10W/5W/3W
Impedance	3.3kΩ/5k/10k	1k/2K/3.3K
Frequency Response (-10dB)	250Hz-20kHz	130Hz-13.2kHz
Sensitivity (1W/1m)	91dB	91dB
Weight	530g	690g
Cut-Out Diameter(mm)	ø150	
Dimensions(mm)	177(ø)x102(D)mm	

## ▶ CS-0610

(구모델 : CS-10A)



Model	CS-610
Rated power	10W/5W/3W
Impedance	1k/2K/3.3K
Frequency Response (-10dB)	355Hz-10KHz
Sensitivity (1W/1m)	89dB
Weight	870g
Cut-Out Diameter(mm)	
Dimensions(mm)	ø228x116(D)

## ▶ CS-05F/610F/615F

(구모델 : CS-3/6/12)



Model	CS-05F	CS-610F	CS-615F
Rated power	5W/3W/1W	10W/5W/3W	15W/7.5W/3.75W
Impedance	2k/3.3k/10k	1k/2k/3.3k	660/1.3k/2.6k
Frequency Response (-10dB)	350Hz-12kHz	350Hz-12kHz	350Hz-14kHz
Sensitivity (1W/1m)	86dB	92dB	93dB
Weight	650g	850g	870g
Cut-Out Diameter(mm)	ø200 ~ ø210		
Dimensions(mm)	230(ø)x100(D)		

## ▶ CS-620FH/630FH/680FH

(구모델 : CS-20/30/80)



Model	CS-620FH	CS-630FH	CS-680FH
Rated power	20W/10W/5W	30W/20W/10W	80W/40W/20W
Impedance	8/500/1k/2k	8/330/500/1k	8/125/250/500
Frequency Response (-10dB)	200Hz-20kHz		
Sensitivity (1W/1m)	88dB	90dB	88dB
Weight	2kg	2.42kg	3.57kg
Cut-Out Diameter(mm)	ø200 ~ ø205		
Dimensions(mm)	230(ø)x168(D)		

## ▶ CS-815FH/830FH

(구모델 : MS-15/30)



Model	CS-815FH	CS-830FH
Rated power	15W/10W/5W	30W/20W/10W
Impedance	660/1k/2k	330/500/1k
Frequency Response (-10dB)	250Hz-17kHz	140Hz-20kHz
Sensitivity (1W/1m)	97dB	94dB
Weight	2.5kg	3.5kg
Cut-Out Diameter(mm)	ø220-ø230	
Dimensions(mm) <WxHxD>	286x263x151	286x263x151

## ▶ CS-503FE

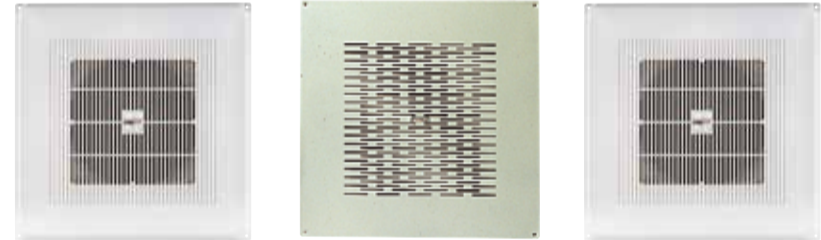
(구모델 : CS-03E5)



Model	CS-503FE
Rated power	3W/2W/1W
Impedance	3.3kΩ/5kΩ/10kΩ
Frequency Response (-10dB)	250Hz-10kHz
Sensitivity (1W/1m)	88dB
Weight	652g
Cut-Out Diameter(mm)	ø210
Dimensions(mm)	ø212x75(D)

## ▶ CS-610Q/605MQ/605Q

(구모델 : CS-10/44/45)



Model	CS-610Q	CS-605MQ	CS-605Q
Rated power	10W/5W	5W/3W/1W	5W/3W/1W
Impedance	1k/2k	2k/3.3k/10k	2k/3.3k/10k
Frequency Response (-10dB)	120Hz-10kHz	180Hz-10kHz	110Hz-14kHz
Sensitivity (1W/1m)	92dB	90dB	90dB
Weight	1kg	1.3kg	1kg
Dimensions(mm) <WxHxD>	303x303x95		

## ▶ CS-301FC/303FC

(구모델 : APT-01FC/03FC)



Model	CS-301FC	CS-303FC
Rated power	1W	3W
Impedance	10kΩ	3.14kΩ
Frequency Response (-10dB)	200Hz-15kHz	200Hz-13kHz
Sensitivity (1W/1m)	80dB	83dB
Weight	173g	203g
Cut-Out Diameter(mm)	ø110 ~ ø115	
Dimensions(mm)	126(ø)x42(D)	

## ▶ CS-301F

(구모델 : APT-01F)



Model	CS-301F
Rated power	1W
Impedance	10kΩ
Frequency Response (-10dB)	260Hz-10kHz
Sensitivity (1W/1m)	84dB
Weight	220g
Cut-Out Diameter(mm)	ø92 ~ ø97
Dimensions(mm)	152(ø)x55(D)

## ▶ CS-301FQ/303FQ

(구모델 : APT-01FQ/03FQ)



Model	CS-301FQ	CS-303FQ
Rated power	1W	3W
Impedance	10kΩ	3.14kΩ
Frequency Response (-10dB)	180Hz-19kHz	200Hz-19kHz
Sensitivity (1W/1m)	80dB	82dB
Weight	189g	217g
Dimensions(mm) <WxHxD>	120x120x49	

## Horn Speaker

## ▶ CH-522/532



Model	CH-522	CH-532
Rated power	20W/10W	60W/30W
Impedance	500Ω/1kΩ	333Ω/666Ω
Frequency Response (-10dB)	110Hz-20kHz	110Hz-18kHz
Sensitivity (1W/1m)	95dB	90dB
Weight	3.5kg	3.5kg
Dimensions(mm) <WxHxD>	294x209x326	

## ▶ HS-20/30/50



Model	HS-20	HS-30	HS-50
Rated power	20W/10W	30W/15W	50W/25W
Impedance	500Ω/1kΩ	330Ω/660Ω	200Ω/400Ω
Frequency Response (-10dB)	350Hz - 5.5kHz	250Hz - 5kHz	380Hz - 6.5kHz
Sensitivity (1W/1m)	106dB	106dB	106dB
Weight	2.45kg	2.85kg	3.1kg
Dimensions(mm) <WxHxD>	ø250x280	ø280x350	ø320x350

## ▶ HS-20RT/30RT/40RT



Model	HS-20RT	HS-30RT	HS-40RT
Rated power	20W/10W	30W/15W	40W/20W
Impedance	500Ω/1kΩ	330Ω/660Ω	200Ω/400Ω
Frequency Response (-10dB)	300Hz - 5kHz	250Hz - 6.5kHz	250Hz - 5kHz
Sensitivity (1W/1m)	104dB	106dB	106dB
Weight	2.3kg	2.95kg	2.95kg
Dimensions(mm) <WxHxD>	250x197.5x310	320x210x365	320x210x365

## Wall Speaker

## ▶ IWS-10(I/B)



Model	IWS-10
Rated power	10W/3W
Impedance	1kΩ/3.3kΩ
Frequency Response (-10dB)	220Hz-12kHz
Sensitivity (1W/1m)	90dB
Weight	1.1kg
Dimensions(mm) <WxHxD>	179x312x109

## ▶ SWS-03/10(I/B/R)



Model	SWS-03	SWS-10
Rated power	3W/2W/1W	10W/5W/3W
Impedance	3.3kΩ/5kΩ/10kΩ	1kΩ/2kΩ/3.3kΩ
Frequency Response (-10dB)	200Hz-14kHz	160Hz-10kHz
Sensitivity (1W/1m)	93dB	91dB
Weight	1.1kg	1.3kg
Dimensions(mm) <WxHxD>	182x274x120	182x274x120

## ▶ WS-203/210/230(I/B)



Model	WS-203	WS-210	WS-230
Rated power	3W/2W/1W	10W/5W/3W	30W/20W/10W
Impedance	3.3kΩ/5kΩ/10kΩ	1kΩ/2kΩ/3.3kΩ	330Ω/500Ω/1kΩ
Frequency Response (-10dB)	137Hz-16kHz	136Hz-16kHz	126Hz-16kHz
Sensitivity (1W/1m)	91dB	91dB	91dB
Weight	1.2kg	1.4kg	2.2kg
Dimensions(mm) <WxHxD>	315x183x124		

## Fashion Speaker

## ▶ WS-15T/30T/50T/80T(W/B)



Model	WS-15T	WS-30T	WS-50T	WS-80T
Rated power	15W	30W/15W	50W/25W	80W/40W
Impedance	8Ω/660Ω	8Ω/330Ω/660Ω	8Ω/200Ω/400Ω	8Ω/125Ω/250Ω
Frequency Response (-10dB)	110Hz-12kHz	100Hz-20kHz	100Hz-20kHz	100Hz-20kHz
Sensitivity (1W/1m)	84dB	85dB	87dB	90dB
Weight	0.9kg	1.72kg	2.37kg	3.57kg
Dimensions(mm) <WxHxD>	92x120x114	139x210x129	173x250x150	210x311x169

## ▶ CI-20T/30T(W/B)



## Line Array Speaker

## ▶ TL SERIES | TL22/TS28



Model	TL22	TS28
Type	Dual 12" 2-way Bi-Amp Line Array	Dual 18" Line Array Subwoofer for Touring
Rated Power (AES)	LF:800W / HF:200W	3400W
Frequency Response (-10dB)	50Hz ~20kHz	34Hz ~ 1kHz
Sensitivity (1W/1m)	LF:108dB / HF:114dB	99.5dB SPL
Nominal Impedance	LF:8Ω / HF:16Ω	4Ω : 2Ω x 2EA(Series)
Passive / Bi-Amp	Bi-Amp	Passive(woofer)
Weights	68.1kg	100.8kg
Dimensions(mm) <WxHxD>	1105x386x530	1368x507x690

## ▶ NLA SERIES | NLA-5/15S



Model	NLA-5	NLA-15S
Type	Compact Line Array Module, 2 x 5" Passive Loudspeaker	Compact Flying-Sub Module, 15" Subwoofer
Rated Power (AES)	150W	600W
Frequency Response (-10dB)	74Hz~18kHz	42Hz~2.7kHz
Sensitivity (1W/1m)	93dB SPL	99dB SPL
Nominal Impedance	16Ω	8Ω
Passive / Bi-Amp	Passive	Passive(woofer)
Weights	11.4kg	32kg
Dimensions(mm) <WxHxD>	477x181x308	477x518x741

## ▶ NLA SERIES | NLA-8/18S



Model	NLA-8	NLA-18S
Type	Compact Line Array Module, 2 x 8" 2way Bi-Amp Loudspeaker	Compact Flying-Sub Module, 18" Subwoofer
Rated Power (AES)	LF:440W / HF:60W	780W
Frequency Response (-10dB)	75Hz~18kHz	37Hz~3kHz
Sensitivity (1W/1m)	LF : 98dB / HF:110dB	103dB SPL
Nominal Impedance	LF: 16Ω / HF: 16Ω	8Ω
Passive / Bi-Amp	Bi-Amp	Passive(woofer)
Weights	24.4kg	46.7kg
Dimensions(mm) <WxHxD>	694x256x486	690x520x870

## ▶ CLA-K SERIES | CLA-5K/15SK



Model	CLA-5K	CLA-15SK
Type	Compact Line Array Module, 2 x 5" Bi-Amp Loudspeaker	Compact Flying-Sub Module, 15" x 1 Subwoofer
Rated Power (AES)	LF: 160W / HF: 30W	600W
Frequency Response (-10dB)	75Hz-18kHz	39Hz-2.7kHz
Sensitivity (1W/1m)	LF: 93dB / HF: 105dB	102dB SPL
Nominal Impedance	LF: 16Ω / HF : 8Ω	8Ω
Passive / Bi-Amp	Bi-Amp	Passive(woofer)
Weights	13.2kg	36.3kg
Dimensions(mm) <WxHxD>	477x170x364	473x505x742

## ▶ CLA-K SERIES | CLA-8K/18SK



Model	CLA-8K	CLA-18SK
Type	Compact Line Array Module, 2 x 8" 2way Bi-Amp Loudspeaker	Compact Flying-Sub Module, 18" x 1 Subwoofer
Rated Power (AES)	LF: 450W / HF: 60W	800W
Frequency Response (-10dB)	72Hz~20kHz	35Hz-3kHz
Sensitivity (1W/1m)	LF: 98dB / HF: 110dB	103dB SPL
Nominal Impedance	LF: 16Ω / HF: 16Ω	8Ω
Passive / Bi-Amp	Bi-amp	Passive(woofer)
Weights	26.7kg	45kg
Dimensions(mm) <WxHxD>	694x256x486	690x520x683

## ▶ PSA-12



Model	PSA-12
Type	Compact Line Array Module, 12" 2way Bi-Amp Fullrange
Rated Power (AES)	LF:400W / HF:60W
Frequency Response (-10dB)	50Hz-20kHz
Sensitivity (1W/1m)	98dB SPL
Nominal Impedance	8Ω
Passive / Bi-Amp	Bi-Amp
Weights	22.2kg
Dimensions(mm) <WxHxD>	558x350x375

## Point Source Speaker

## ▶ CSQ-K SERIES | CSQ-8K/10K/12K/15K



Model	CSQ-8K	CSQ-10K	CSQ-12K	CSQ-15K
Type	Compact Multipurpose 8" 2way Passive Fullrange	Compct Multipurpose 10" 2way Passive Fullrange	Compact Multipurpose 12" 2way Passive Fullrange	Compact Multipurpose 15" 2way Passive Fullrange
Rated Power (AES)	225W	280W	400W	480W
Frequency Response (-10dB)	50Hz-20kHz	48Hz-20kHz	46Hz-20kHz	45Hz-20kHz
Sensitivity (1W/1m)	95dB SPL	97dB SPL	100dB SPL	102dB SPL
Nominal Impedance	8Ω	8Ω	8Ω	8Ω
Weights	11.5kg	13.3kg	22.4kg	29.4kg
Dimensions(mm) <WxHxD>	268x450x258	308x490x289	358x573x338	428x644x403

## ▶ SQ-K SERIES | SQ-8K/8T/10K/10T/12K/15K



Model	SQ-8K/8T	SQ-10K/10T	SQ-12K	SQ-15K
Type	SQ-8K : 8" 2way Passive SQ-8T : 8" 2way Passive High Impedance	SQ-10K : 10" 2way Passive SQ-10T : 10" 2way Passive High Impedance	12" 2way Passive	15" 2way Passive
Rated Power (AES)	68Hz~20kHz	64Hz~20kHz	60Hz~20kHz	54Hz~20kHz
Frequency Response (-10dB)	150 W	250 W	350 W	450W
Sensitivity (1W/1m)	95dB SPL	97dB SPL	100dB SPL	102dB SPL
Nominal Impedance	8Ω			
Transformer Taps(70 V/100 V) (SQ-8T/10T Only)	100 V : 67Ω, 150 W 70 V : 67Ω, 75 W	100 V : 40Ω, 250 W 70 V : 40Ω, 125 W	-	-
Weights	10.7kg	12.4kg	18.7kg	28.2kg
Dimensions(mm) <WxHxD>	270x450x258	312x490x294	363x573x348	435x633x421

## ▶ SE-K SERIES | SE-8K/8T/10K/10T/12K/15K



Model	SE-8K/8T	SE-10K/10T	SE-12K	SE-15K
Type	SE-8K : 8" 2way Passive Loudspeaker SE-8T : 8" 2way Passive Loudspeaker with Hi-Z	SE-10K : 10" 2way Passive Loudspeaker SE-10T : 10" 2way Passive Fullrange Loudspeaker with Hi-Z	12" 2way Passive Loudspeaker	15" 2way Passive Loudspeaker
Rated Power (AES)	125W	150W	250W	300W
Frequency Response (-10dB)	65Hz~20kHz	55Hz~20kHz	50Hz~20kHz	45Hz~20kHz
Sensitivity (1W/1m)	93dB SPL	94dB SPL	96dB SPL	97dB SPL
Nominal Impedance	8Ω			
Transformer Taps(70 V/100 V) (SE-8T/10T Only)	100 V : 67Ω, 150 W 70 V : 67Ω, 75 W	100 V : 40Ω, 250 W 70 V : 40Ω, 125 W	-	-
Weights	9.1kg	10.9kg	15.7kg	20.9kg
Dimensions(mm) <WxHxD>	278x410x300	330x480x360	380x550x400	450x630x450

## ▶ CSB-K SERIES | CSB-12K/15K/18K



Model	CSB-12K	CSB-15K	CSB-18K
Type	12" Compact Subwoofer	15" Compact Subwoofer	18" Compact Subwoofer
Rated Power (AES)	500W	600W	800W
Frequency Response (-10dB)	45Hz-120Hz	39Hz-120Hz	35Hz-120Hz
Sensitivity (1W/1m)	95dB SPL	102dB SPL	103dB SPL
Nominal Impedance	8Ω	8Ω	8Ω
Weights	22.5kg	32.7kg	44.3kg
Dimensions(mm) <WxHxD>	366x410x676	465x505x740	558x606x883

## ▶ SW08



Model	SW08
Type	Compact Surround Wall Type 8" 2way Passive Fullrange
Rated Power (AES)	225W
Frequency Response (-10dB)	50Hz~20kHz
Sensitivity (1W/1m)	95dB SPL
Nominal Impedance	8Ω
Weights	9.3kg
Dimensions(mm) <WxHxD>	340 x 400 x 220 mm

## ▶ MS SERIES | MS-80/80LT/100/130/200S/400S



Model	MS-80	MS-80LT	MS-100
Type	5" 2way Passive	5" 2way Passive High Impedance	6" 2way Passive
Rated Power (AES)	80 W		
Frequency Response (-10dB)	60Hz-20kHz		
Sensitivity (1W/1m)	88dB SPL		
Nominal Impedance	8Ω		
Weights	3.6kg	3.8kg	6.7kg
Dimensions(mm) <WxHxD>	154x252x212	152x250x209.5	211x375x269



Model	MS-130	MS-200S	MS-400S
Type	8" 2way passive	10" Subwoofer	Dual 10" Subwoofer
Rated Power (AES)	130W	200W	400W
Frequency Response (-10dB)	45Hz-20kHz	35Hz~250Hz	35Hz~250Hz
Sensitivity (1W/1m)	94dB SPL		
Nominal Impedance	8Ω		
Weights	9.1kg	13kg	42
Dimensions(mm) <WxHxD>	245x420x327	365x320x435	715x320x435

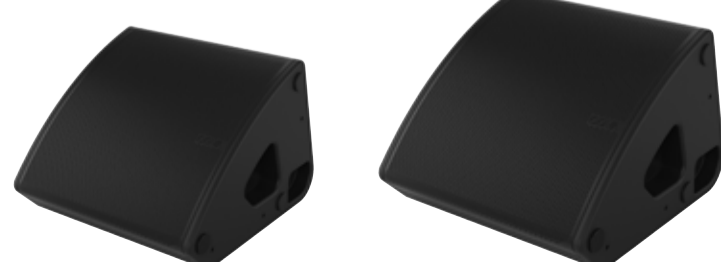
## Stage Monitor Speaker

## ▶ CMM-K SERIES | CMM-12K/15K



Model	CMM-12K	CMM-15K
Type	Coaxial Multipurpose,12" 2way Passive Loudspeaker	Coaxial Multipurpose,15" 2way Passive Loudspeaker
Rated Power (AES)	350W	400W
Frequency Response (-10dB)	50Hz-20kHz	45Hz-20kHz
Sensitivity (1W/1m)	98dB SPL	99dB SPL
Nominal Impedance	8Ω	8Ω
Passive / Bi-Amp	Passive	
Weights	20.7kg	26.1kg
Dimensions(mm) <WxHxD>	508x408x393	590x480x489

## ▶ M SERIES | M.2/M.5



Model	M.2	M.5
Type	Coaxial 2way Bi-Amp Monitor	Coaxial 2way Bi-Amp Monitor
Frequency Response (-10dB)	65Hz-18kHz	65Hz-18kHz
Transducer	LF:12", 76mm(3") Voice coil / HF:33mm(1.3"), 75mm(3") Voice Coil	LF:15", 76mm(3") Voice coil / HF:33mm(1.3"), 75mm(3") Voice Coil
Power Handling	350W AES / 1400W Peak	400W AES / 1600W Peak
Sensitivity (1W/1m)	107dB SPL	107dB SPL
Nominal Dispersion	60°x40°(HxV) Horn Rotatable	60°x40°(HxV) Horn Rotatable
Dimensions(mm) <WxHxD>	510x377x543	590x403x606

## Powered Speaker

## ▶ PS-80



Model	PS-80
Type	2-Way Powered Loudspeaker
Rated Power (AES)	170W
Frequency Response (-10dB)	60Hz~20kHz
Sensitivity (1W/1m)	110dB SPL
Nominal Impedance	8Ω
Weights	4.3kg
Dimensions(mm) <WxHxD>	160x250x243

## ▶ IX SERIES | IX8/12/15, IX8H/8HT/12H/15H



Model	IX8	IX12	IX15	IX8H	IX8HT	IX12H	IX15H
Type	8" 2way Passive	12" 2way Passive	15" 2way Passive	High Power 8" 2way Passive	High Power 8" 2way Passive High Impedance	High Power 12" 2way Passive	High Power 15" 2way Passive
Rated Power (AES)	125W	200W	300W	225W	225W	425W	625W
Frequency Response (-10dB)	55Hz-20kHz	50Hz-20kHz	40Hz-20kHz	60Hz-20kHz		48Hz-20kHz	39Hz-20kHz
Sensitivity (1W/1m)	95dB SPL	96dB SPL	97dB SPL	99dB SPL		100dB SPL	101dB SPL
Nominal Impedance	8Ω						
Transformer Taps (70 V/100 V)					100 V : 44.4Ω, 225 W 70 V : 44.4Ω, 115 W		
Weights	270x430x260	424x640x342	480x710x384	270x430x260	270x430x260	424x640x342	480x710x384
Dimensions(mm) <WxHxD>	6.3kg	15.5kg	19.6kg	7.9kg	TBD	17.8kg	24kg